

Utiliti Controls

Plot D 30/1, Turbhe MIDC, Opp. Savala
Cold Storage, Navi Mumbai – 400 705.

☎ - 022 2768 0109 / 2763 6935

Mob.: 9619338331 / 8879704406

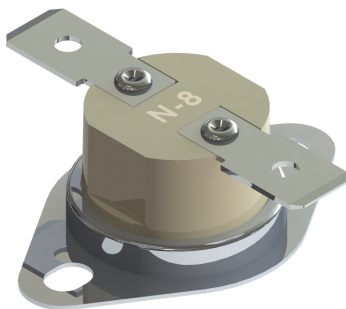
E-mail : marketing@utiliticontrols.com

Web: www.utiliticontrols.com



Snap Disc Thermostats: N-8, N-8C, N-8M

Utiliti Controls is a leading manufacturer of Snap Disc Thermostats in India, established in 1990. N-8, 1/2" bimetal disc thermostat, is reliable, compact & cost-effective product. The snap action of bimetal disc provides high speed contact separation resulting in excellent life cycle characteristics upto 24 Amps, 230 VAC. A variety of terminals and mounting brackets are available. N-8 is used as a temperature control device and it also provides protection against overheating.



Auto Reset
Disc Thermostat N-8

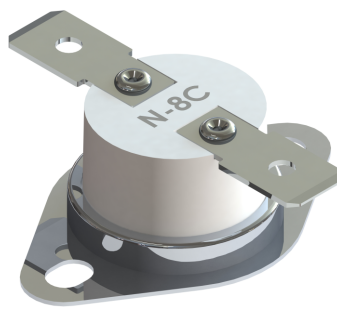
8 A,250 VAC, 100000 Cycles
16 A,250 VAC, 30000 Cycles
24 A,250 VAC, 10000 Cycles

Base Material: PPS

Temp range: 50-160°C

Tolerance: $\pm 4\%$

Differential Temp: 10-40°C



Auto Reset
Ceramic Thermostat N-8C

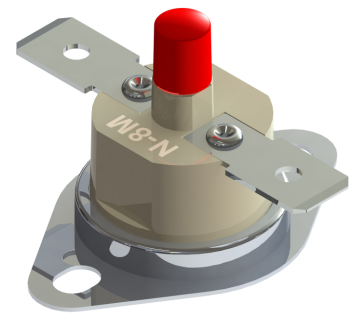
16 A,250 VAC, 30000 Cycles
24 A,250 VAC, 10000 Cycles

Base Material: Ceramic

Temp range: 50-220°C

Tolerance: $\pm 4\%$

Differential Temp: 10-40°C



Manual Reset
Disc Thermostat N-8M

8 A,250 VAC, 100000 Cycles
16 A,250 VAC, 30000 Cycles
24 A,250 VAC, 10000 Cycles

Base Material: PPS

Temp range: 50-160°C

Tolerance: $\pm 5\%$

Features:

- As per international design
- High current capacity
- High thermal sensitivity
- Available in plastic and ceramic base
- Automatic, one shot, manual reset modes available
- Variety of mounting brackets and terminals available
- Long contact life

Applications:

- Sandwich Toaster
- Water Heaters
- Vacuum Cleaners
- Coffee Makers
- Microwave Ovens
- Washing Machine
- Electric Heaters
- Rice Cookers

Selection Code:

Example:

N8-NC(8)-100(3)-85(5)-6.3-V-M6

N8-NO(8)-100(3)-85(5)-6.3-V-M6

Model: N-8

Switch: NC Normally closed

Switch: NO Normally Open

Current: 8 Amps

Cut-off Temperature: 100°C

Tolerance: $\pm 3^{\circ}\text{C}$

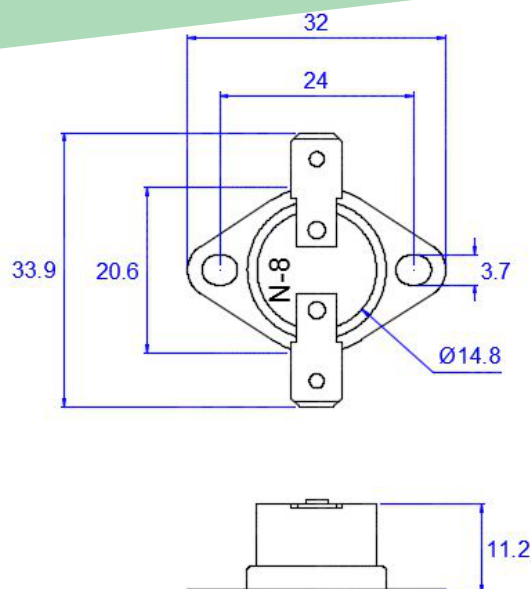
Cut-in Temperature: 85°C

Tolerance: $\pm 5^{\circ}\text{C}$

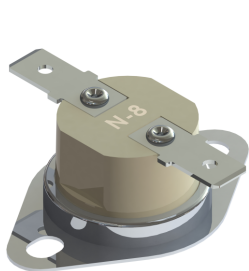
Terminal type: 6.3 mm Quick connect terminals

Terminal direction: Vertical

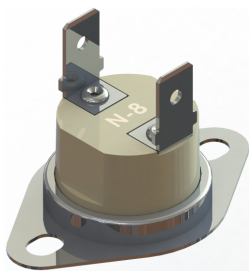
Bracket: M6 Moving bracket



Terminals :



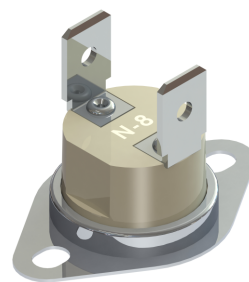
4.8 x 0.5 mm, Flat



4.8 x 0.5 mm, Vertical

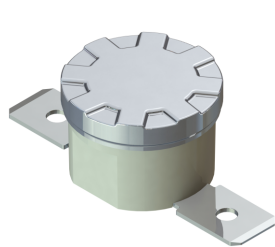


6.3 x 0.8 mm, Flat

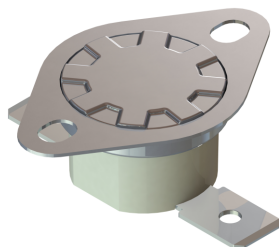


6.3 x 0.8 mm, Vertical

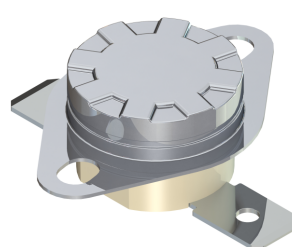
Mounting Configurations :



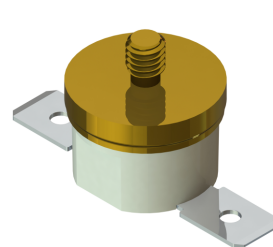
M0 Cover



M6 Moving Surface Mount Bracket



M2 Air Stream Bracket



M4 4 mm Stud type mounting Bracket